
Mouse Emulation Software

MES_2X v1.3.7

User's Guide

DMC Co., Ltd.

--List of Contents--

Introduction	1
Installation	2
Before use	9
Function setting	10
History	16

The software described in this document is provided based on the Software License Agreement, and can be used only when you agree with the contents of the agreement.

Copyright

Copyright © 2008 DMC Co., Ltd.

About the trademarks

Windows is the registered trademarks of Microsoft Corporation in the United States.

Introduction

This guide provides the information about the MES_2X mouse emulation software. Read this guide completely so you can fully utilize the functions of this software.

Features

The MES_2X mouse emulation software lets you use our touch screen controller, the TSC series, just as though you were using a mouse by operating the touch screen on Windows.

1. This software can implement an operating environment equivalent to the mouse function through operating the touch screen.
2. Because you can use the touch screen together with a mouse, you can change between the touch screen and mouse without needing a special setting.
3. Whether you connect the touch screen controller with a serial port or USB, you can select the necessary driver at installation.

Conventions used in this guide

When Windows is mentioned in this guide it means supported operating system.

This software represents the MES_2X.

Supported models

Supported model: IBM PC/AT or its compatibles

Supported operating system: Windows XP Professional SP2/SP3, Home Edition SP2/SP3,
Windows 2000 SP4

Remarks

1. This software is for our touch screen controller TSC series. It is not intended for operation with the other touch screen controllers and the products similar to them.
2. For how to use this software, read this guide well. Do not use any other methods with this software.
3. This software is not intended for the model of computer and operating system other than the supported ones.
4. Avoid using this software with other mouse emulation software or with similar functions installed. In such a problematic environment the software may malfunction.
5. Read the about the driver after executing the installer program (Install.exe). You cannot read about the driver before executing the installer program or operating the touch screen.
6. When the previous version is already installed, please be sure to install this software after uninstalling it. If overwrite installation is carried out, the software may malfunction.

Installation

Installation of this software differs, depending on whether a serial port or USB port, has been connected to the touch screen controller.

This section describes the procedures for installation and the parts that you need to set individually depending on whether you have a serial or USB port connected.

Regular installation steps

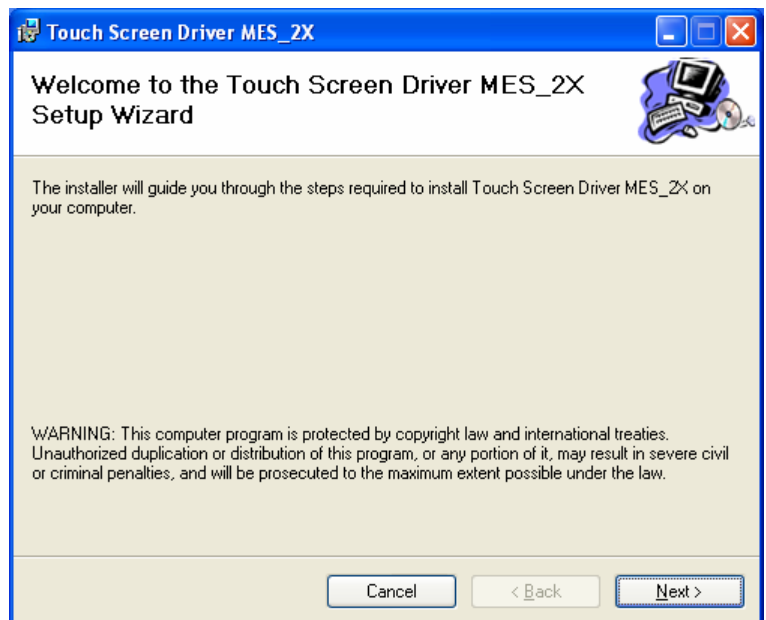
1. Turn on the computer's power.

Turn on the power to boot Windows.

2. Start the installer.

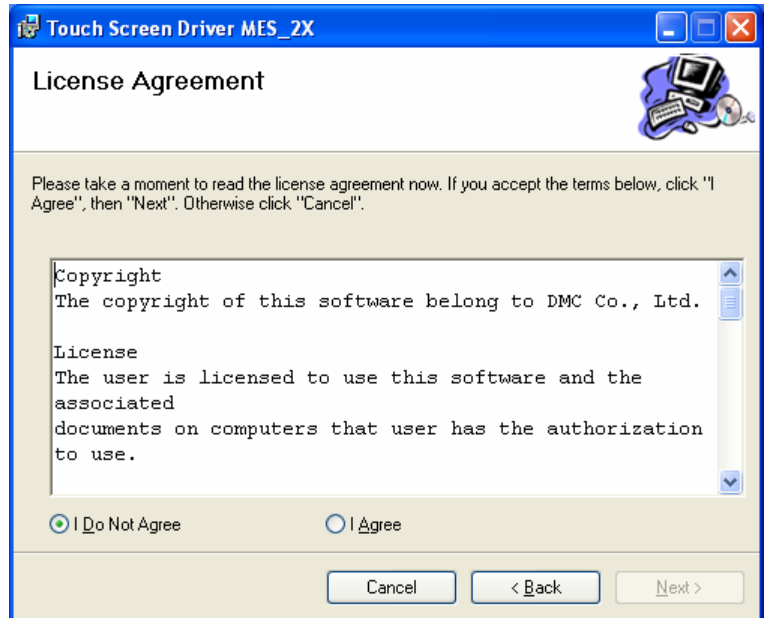
Double-click on "Install.exe" to start the installer.

Click on "Next >".



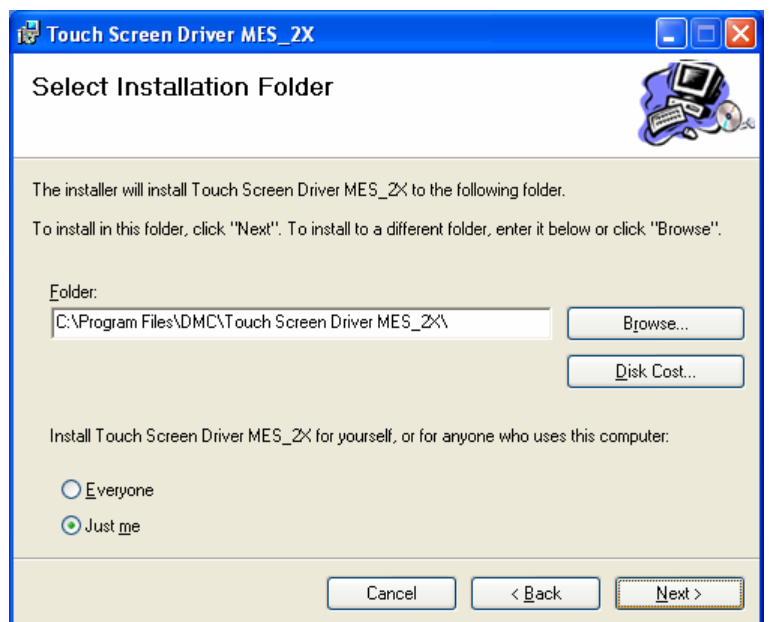
3. License Agreement

Read the license agreement. If you accept the terms, click “I Agree”, then “Next >”.



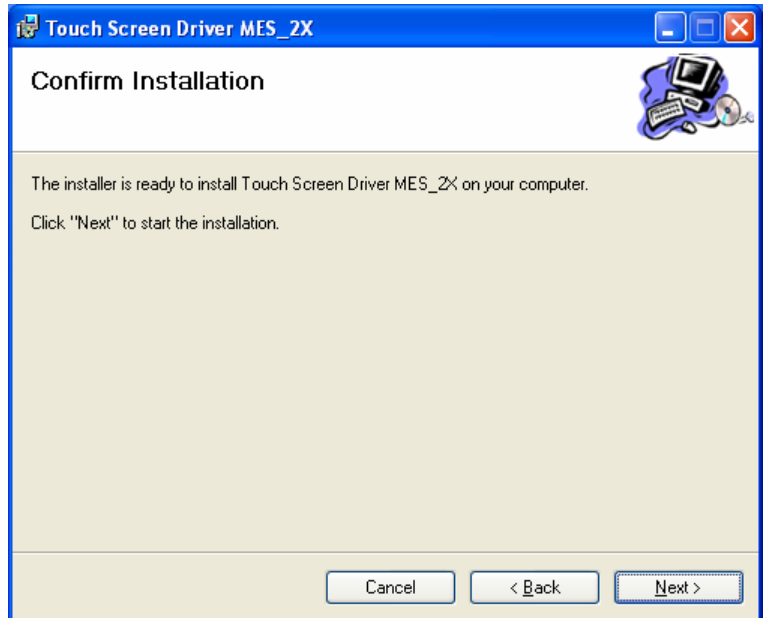
4. Select Installation Folder

To install in default folder, click “Next >”, To install to a different folder, enter it or click “Browse”.



5. Confirm Installation

Click “Next >” to start the installation.

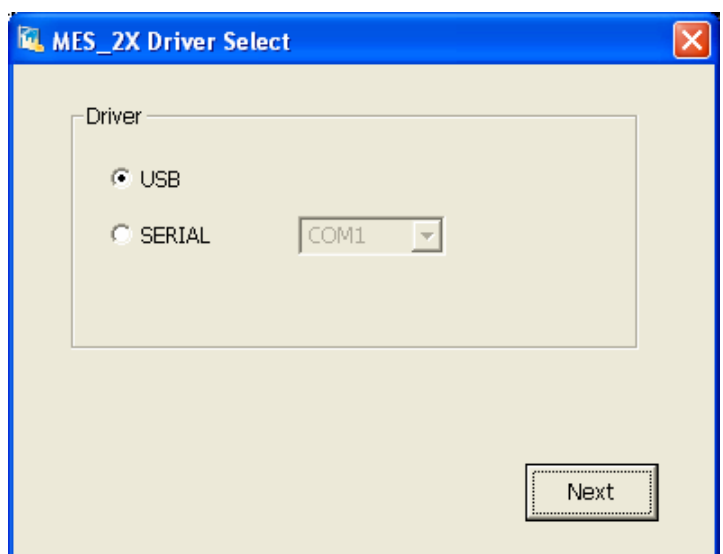


6. Driver select

Choose the controller type which you use.

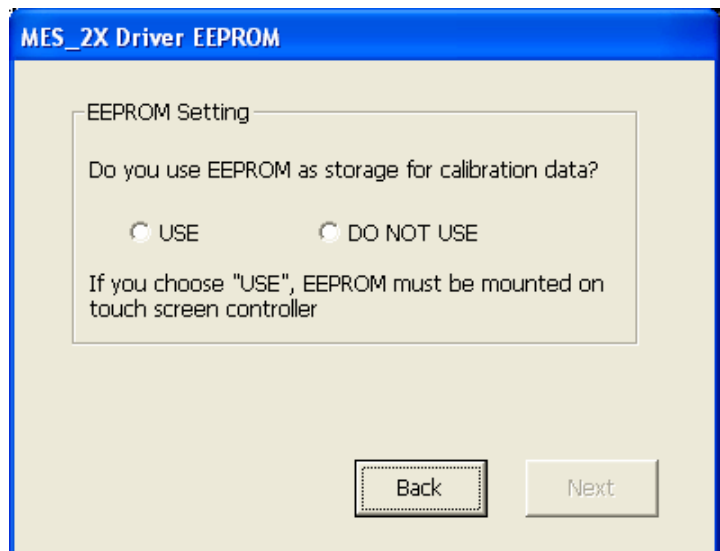
If USB, click “Next”.

If serial, chose the COM port which you use. Then, click “Next”.



7. EEPROM setting

Choose to "USE" if you use an EEPROM as storage for calibration data. If not, choose to "DO NOT USE". Then, click "Next".



8. Hardware Installation

The following window will be displayed in the middle of installation. Please click "Continue Anyway".



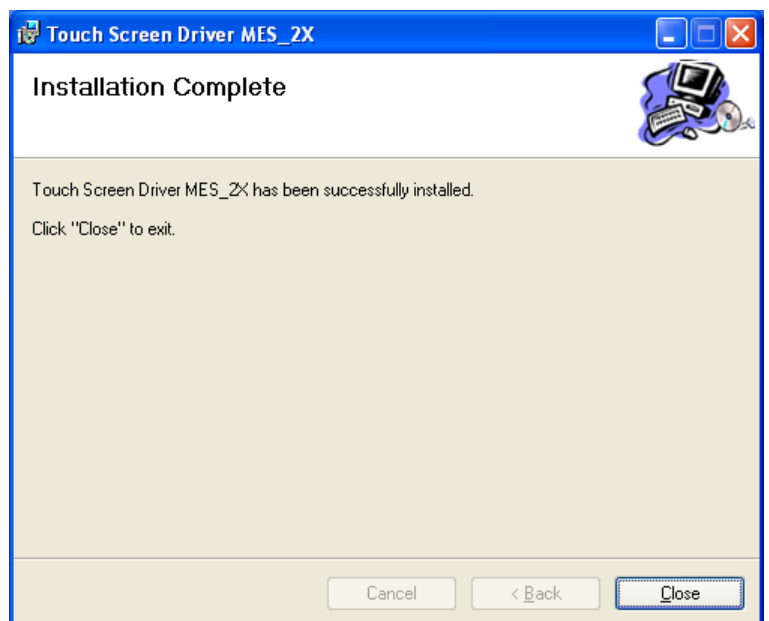
9. Found New Hardware Wizard

The following window will be displayed in the middle of installation. Do nothing, and please wait for a while.



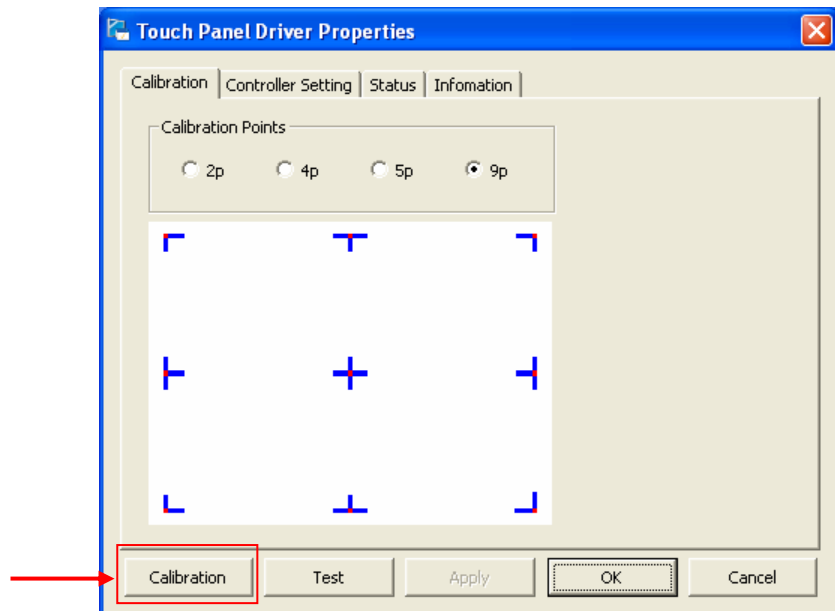
10. Installation Complete

Driver has been successfully installed. Click "Close".



“Touch Panel Driver Properties” window is displayed after having click “Close”. We recommend you carry out calibration on this situation.

Please carry out calibration after having finished the next item (11.) if you use the USB controller.



11. Hardware Installation (In USB mode)

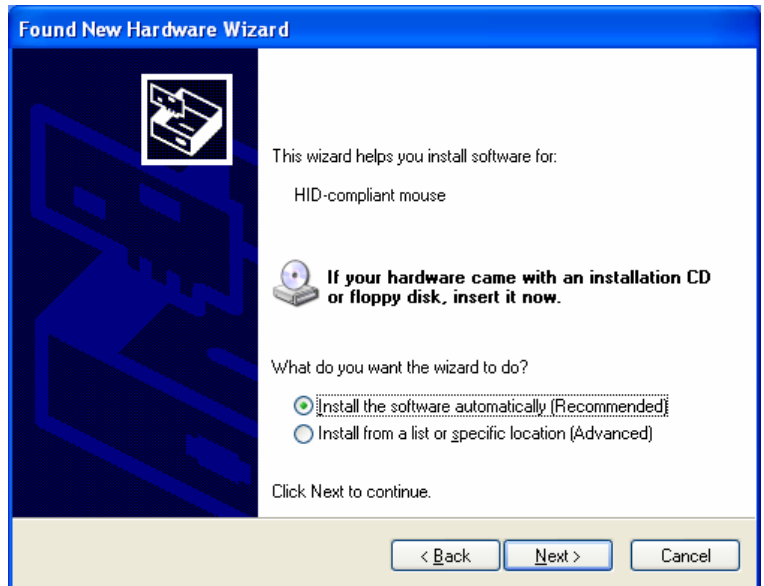
In the case of a USB controller, a “Hardware Installation” window is displayed when you connect a USB controller to a computer after installation of MES_2X.

Hardware name: DMC, TSC Series, USB

Click on “Continue Anyway”.



A “Found New Hardware Wizard” is displayed afterwards. You choose “Install the software automatically [Recommended]”, and click “Next”.



12. Uninstalling the software

To uninstall the MES_2X, go to the Control Panel and select “Add or Remove Programs” to choose the “Touch Screen driver MES_2X”. Finally click “Remove”. After activating the Uninstaller, follow the instructions on the screen on the software.

Before use

Before you begin to use the touch panel, you need to adjust (calibrate) it. Calibration is a very important so you can align the position where you touch the touch panel with the Windows cursor position. This calibration adjustment lets you operate the touch panel with ease.

<When you do not use an EEPROM as calibration data save place.>

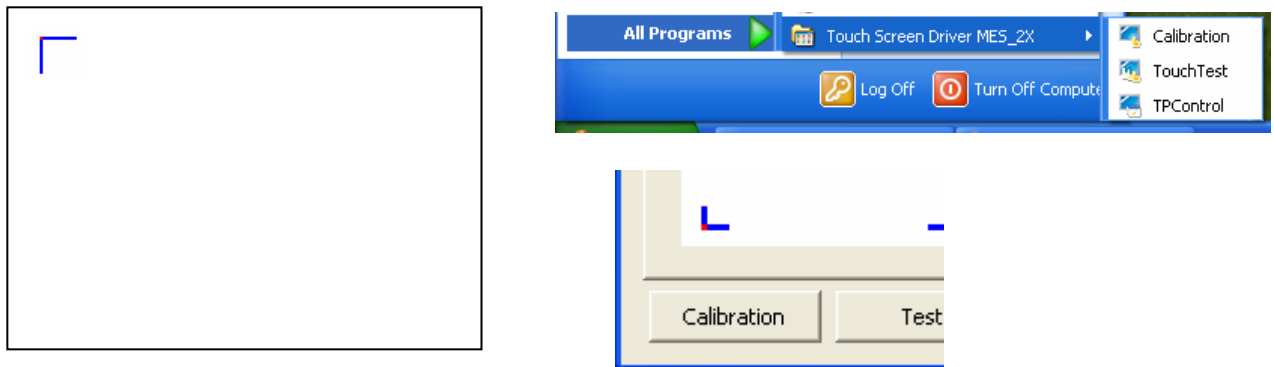
Once you perform the calibration, the calibration information is stored in Windows. You need not make the calibration every time you boot Windows.

Please try the following methods to make the calibration.

1. [Start] -> [All Programs] -> [Touch Screen Driver MES_2X] -> [Calibration]
2. [Touch Panel Driver Properties] -> [Calibration] button

Then use your finger to touch a red part of the target. Touching the section makes the target appear at another location. Similarly, touch that location too.

Calibration screen



When you have selected all the calibration points, a message “Check calibration” appears to request you save the calibration data. When you are able to make a touch respond to every mark you have been made without any trouble, click the “Yes” button. If you touch a place other than the calibration points by mistake, leave it alone by time-out, or click “No”. Then the calibration you made is discarded and is not saved in Windows.

<When you use an EEPROM as calibration data save place.>

If this is enable, operation which performs a calibration is the same as that of the case that the function of EEPROM above mentioned is not used. However, the save place of calibration data is in EEPROM.

The touch panel coordinates may slip from those at installation with time change. In such a case, it is recommended to make calibration again.

Function setting

Its flexible customize function facilitates the operating environment which meets a specific application. This section describes which allows you to make various setting.

A: Activating the Adjust setting screen

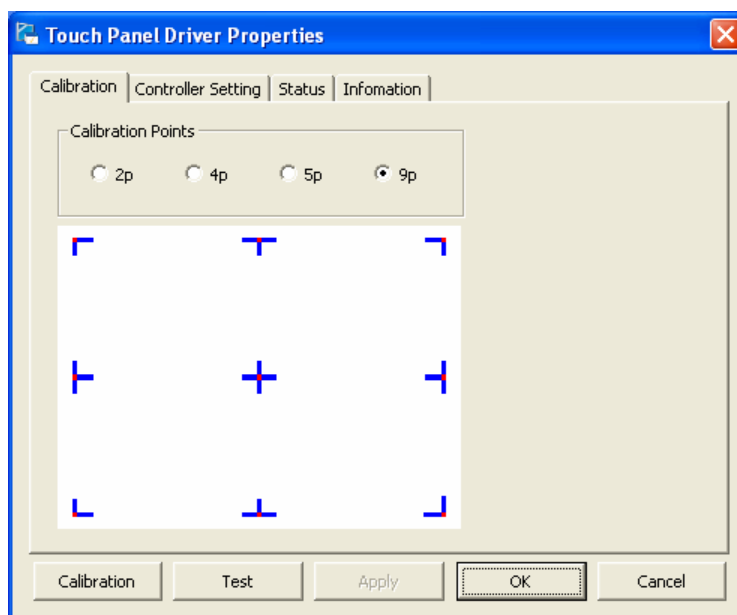
1. [Start] -> [All Programs] -> [Touch Screen Driver MES_2X] -> [TPControl]

“Touch Panel Driver Properties” window appears. The screen is divided by several tabs. These tabs are classified for each purpose of setting.

When you change the setting, be sure to press the “Apply” button to apply the changed contents.

B: Calibration

This window is setting about the calibration.



Calibration Points:

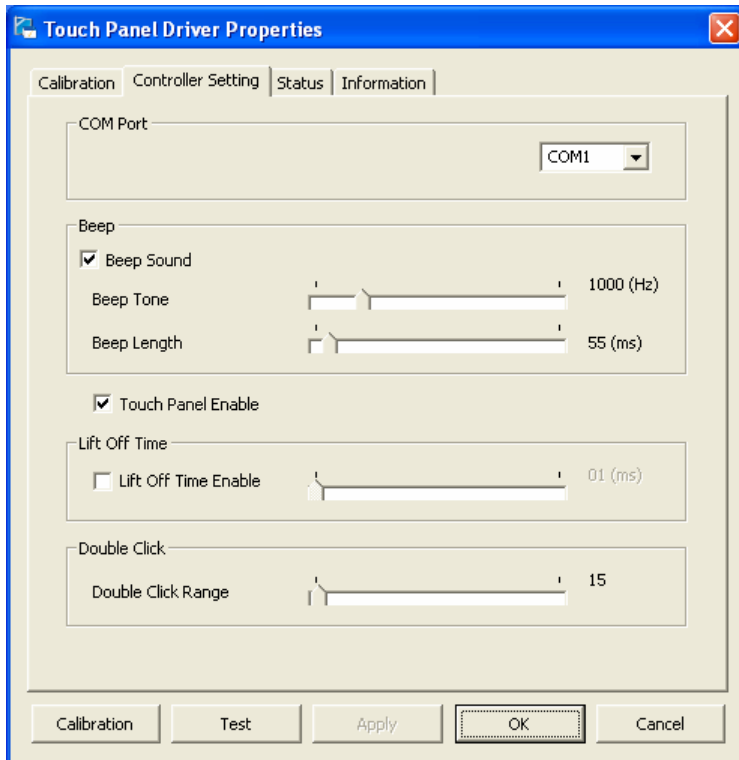
Sets the number of calibration points. By the default, it is 9 points, and according to the need, 2/4/5 can be set.

You cannot choose 2 points when you chose “USE” an EEPROM for during installation.

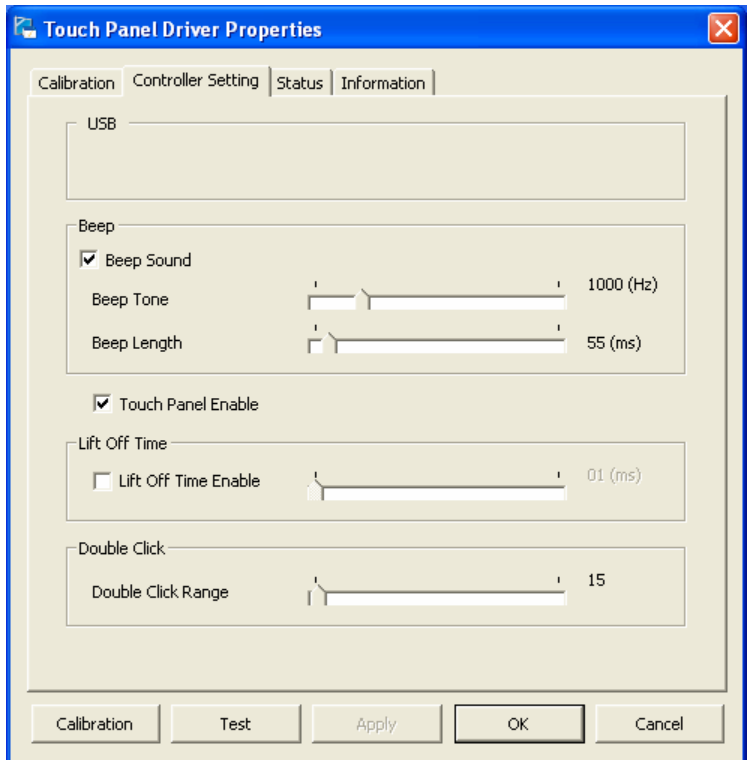
C: Controller Setting

You can set basic settings.

Serial controller



USB controller



<COM Port/USB>

When you use a serial controller, you can change the COM port.

When you use a USB controller, nothing is shown.

<Beep>

Beep Sound: Turns ON/OFF the click sound.

Beep Tone: Sets the frequency of the click sound. The more the set value is, the higher the sound is. Default value is 1000 Hz.

Beep Length: Sets the period of the click sound. The more the set value is, the longer the click sound is. Default value is 55 ms.

Touch Panel Enable: Sets the touch screen enabled/disabled.

<Lift Off Time>

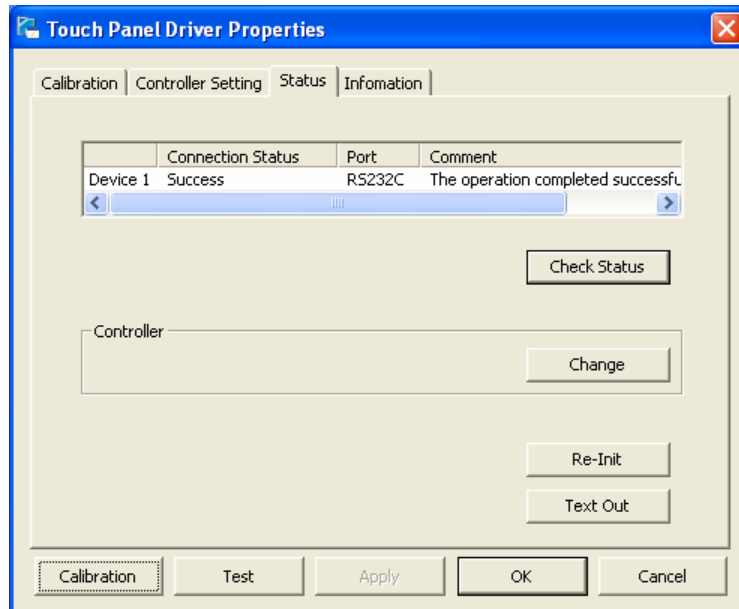
Lift Off Time Enable: Turning on the check lets a touched finger (pen) to be regarded as having been detached immediately when it has been detached. Please check the item when you enter characters. And please set it in appropriate time.

<Double Click>

Double Click Range: At the second touch, set the number of dots in the vertical/horizontal allowable value for which the position is regarded as the same as the first touch. If a too small value is set, note that you cannot double-click. Default value is 15.

D: Status

You can confirm the controller status display, and re-initialize the controller.



Connection Status:

- Success Communication with the controller does not have any problem.
- Failed Touch screen is not connected to the controller. Or an EEPROM may be empty if you use an EEPROM.
- Invalid The driver may not be loaded.
- Unconnection The controller may not be connected.

Check Status:

Resets the "Connection Status" to the up-to-date display.

Change:

You can change a controller to use.

Re-Init:

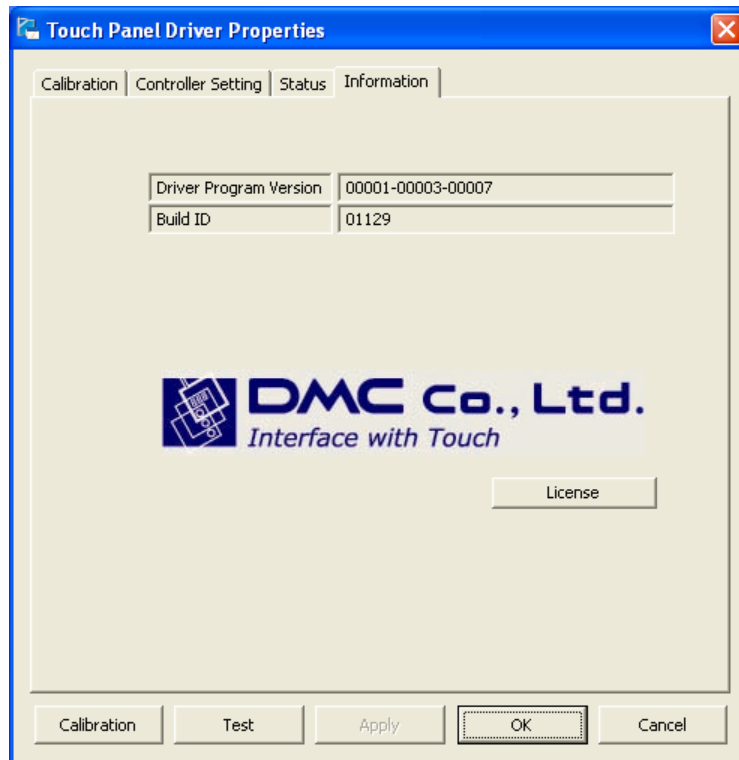
Re-initialize the controller.

Text Out:

Output the setting. This file is useful for technical support.

E: Information

You can confirm a version of this software and license.

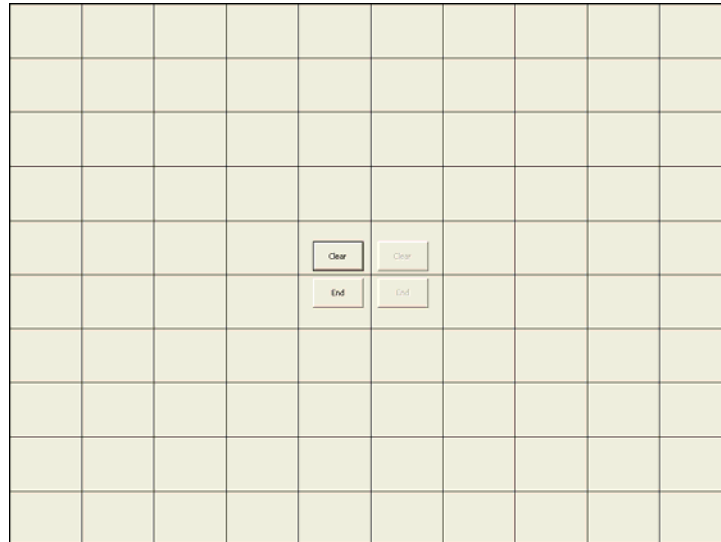


F: Test

It can perform by either following method.

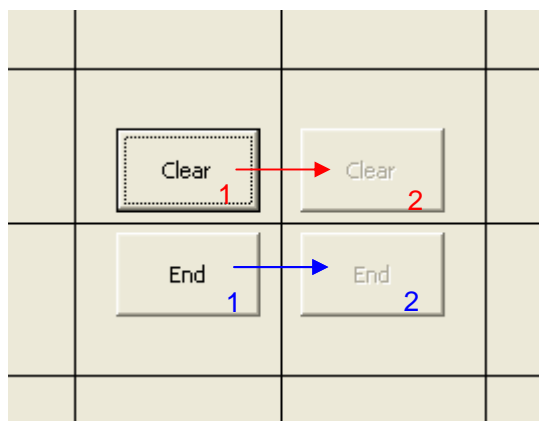
1. [Start] -> [All Programs] -> [Touch Screen Driver MES_2X] -> [TouchTest]
2. [Touch Panel Driver Properties] -> [Test] button

Then the test window opens. You can do a drawing test.



When you clear a screen, you click “Clear 1” and next “Clear 2”.

When you end a test program, you click “End 1” and next “End 2”.



History

Rev.1 (March 25, 2008)

First release

Rev.2 (June 4, 2008)

Added the supported OS: Windows XP Professional SP3, Home Edition SP3

MES_2X v1.3.7 User's Guide

Rev.2, June 4, 2008

©2008 DMC Co., Ltd.

This document can be freely distributed, but any alternation to this document is prohibited.

DMC Co., Ltd.

<http://www.dmccoltd.com/english/>

9th floor, Kanda Sento Building, 1-2-4 Yushima, Bunkyo-Ku, Tokyo 113-0034, Japan