

Mitsubishi Inverter  
FR-E700 Series  
FR-E710W-0.1K

Sample Screen Manual

Mitsubishi Electric Corporation

## Using the Samples

---

The sample screen data and files such as the instruction manual can be used upon agreement to the following matters.

- (1) This data is available for use by customers currently using or considering use of Mitsubishi products.
- (2) The intellectual property rights of the files provided by Mitsubishi (hereinafter referred to as the "Files") belong to Mitsubishi.
- (3) Alteration, reproduction, transfer or sales of the Files is prohibited.  
This does not apply when the content, in part or full, is used for Mitsubishi products incorporated in a device or system created by the customer. Furthermore, this does not apply to the transfer, reproduction, reference or change of layout in the specifications, designs or instruction manuals of built-in products prepared by the customer using Mitsubishi products.
- (4) Mitsubishi will not be held liable for any damages resulting from the use of the Files or the data extracted from the Files. The customer is responsible for all use.
- (5) If any usage conditions are appended to the Files, those conditions must be observed.
- (6) The Files may be deleted or the contents changed without prior notice.
- (7) When using the Files, please always read the corresponding manuals and related manuals indicated therein. Please pay special attention to safety, and correctly handle the product.

## CONTENTS

---

CONTENTS .....	3
REVISIONS .....	4
1. OUTLINE.....	5
2. SYSTEM CONFIGURATION .....	5
3. GOT.....	5
3.1 System Applications That Are Automatically Selected .....	5
3.2 Controller Setting of Screen Design Software .....	5
3.1 Overlap Window Setting of Screen Design Software .....	5
4. INVERTER FR-E700.....	6
4.1 Inverter FR-E700 Communication Settings.....	6
4.2 Inverter FR-E700 Parameter Settings .....	6
5. SCREEN SPECIFICATIONS .....	7
5.1 Display Language .....	7
5.2 Screen Transition.....	7
5.3 Explanation of Screens.....	9
5.3.1 Menu (B-30001).....	9
5.3.2 Operation and Monitoring (B-30002).....	10
5.3.3 Graph (B-30003).....	12
5.3.4 Alarm (B-30006) .....	14
5.3.5 Parameter 1 (B-30004), Parameter 2 (B-30005).....	15
5.3.6 Manual Display (B-30500) .....	16
5.3.7 Alarm Reset (W-30001).....	18
5.3.8 Language Setting (W-30002) .....	19
5.3.9 Clock Setting (W-30003) .....	20
5.3.10 Batch Monitor Display (W-30004) .....	21
5.4 Device List .....	22
5.5 Comment List .....	24
5.6 Script List.....	24
6. MANUAL DISPLAY .....	29
6.1 Preparing Document Data for Manual Display .....	29

## REVISIONS

---

### Sample Screen Manual

Date	Control No.*	Description
2013/10	BCN-P5999-0106	First edition
2015/2	BCN-P5999-0106-2	Device Specification for Document ID

\* The Control No. is noted at the lower right of each page.

### Project Data

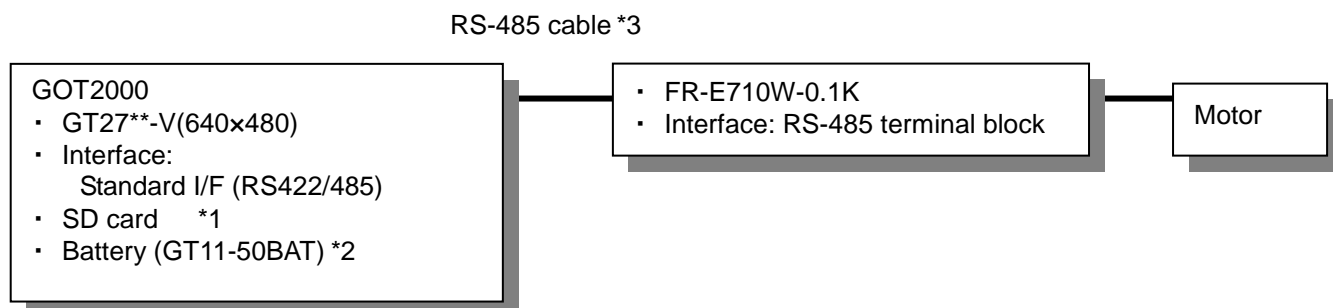
Date	Project data	GT Designer3*	Description
2013/10	mitsubishi_FR-E700_V_Ver1_E.GTX	1.100E	First edition
2015/2	mitsubishi_FR-E700_V_Ver2_E.GTX	1.126G	Device Specification for Document ID

\* The version number of screen design software used to create the project data is listed. Please use the screen design software with the listed version or later.

## 1. OUTLINE

This manual explains the sample screens of GOT2000 connected to a FR-E700 (FR-E710W-0.1K) inverter in serial (RS-485) communication. The sample screens can be used to change the running speed and rotation direction, monitor the output frequency and output current, or give the inverter instructions to perform other operations.

## 2. SYSTEM CONFIGURATION



\*1 The SD card is used for the logging and document display functions.

\*2 The battery is used for the backup of the clock data and the logging data in the SRAM user area. (The battery is provided with the GOT as standard.)

\*3 For more details about the cable, please refer to the "GOT2000 Series Connection Manual (Mitsubishi Products)".

## 3. GOT

### 3.1 System Applications That Are Automatically Selected

Type	System application name		
Standard Function	Standard System Application		
	Standard Font		Japanese
Communication Driver	FREQROL 500/700		
Extended Function	Standard Font		Chinese (Simplified)
	Outline Font	Gothic	Alphanumeric/Kana
			Japanese (Kanji)
			Chinese (Simplified)
	Document Display		

### 3.2 Controller Setting of Screen Design Software

Detail Setting

Item	Set value	Remarks
Transmission Speed (BPS)	38400 bps	(Initial value: 19200 bps)
Data Bit	7 bit	
Stop Bit	1 bit	
Parity	Odd	
Retry (Times)	3	
Timeout Time (Sec)	3	
Delay Time (ms)	10	

### 3.3 Overlap Window Setting of Screen Design Software

[Close the window when switching base screens] of [Detail Setting] for overlap window in [Screen Switching/Window] is enabled to close the window when switching base screens.

## 4. INVERTER FR-E700

### 4.1 Inverter FR-E700 Communication Settings

Item	Set value	Remarks
PU communication station number	0	Station number 0
PU communication speed	384	38400 bps (initial value: 9600 bps)
PU communication stop bit length	10	1 bit (initial value: 1)
PU communication parity check selection	1	Odd parity (initial value: 2)
PU communication retry count	9999	No error stop (initial value: 1)
PU communication check time interval	9999	No communication check (initial value: 0)
PU communication waiting time setting	0	(Initial value: 9999)
PU communication CR/LF selection	1	With CR
Protocol selection	0	Mitsubishi inverter protocol
Operation mode selection	0	External operation mode at power ON
Communication startup mode selection	1	Network operation mode (initial value: 0)
Communication EEPROM write selection	0	Write to EEPROM and RAM

### 4.2 Inverter FR-E700 Parameter Settings

The following setting values were used to confirm operation at Mitsubishi.

Item	Set value	Remarks
Torque boost	6.0	Initial value
Maximum frequency	120	Initial value
Minimum frequency	0	Initial value
Multi-speed setting (high speed)	60	Initial value
Multi-speed setting (medium speed)	30	Initial value
Multi-speed setting (low speed)	10	Initial value

## 5. SCREEN SPECIFICATIONS

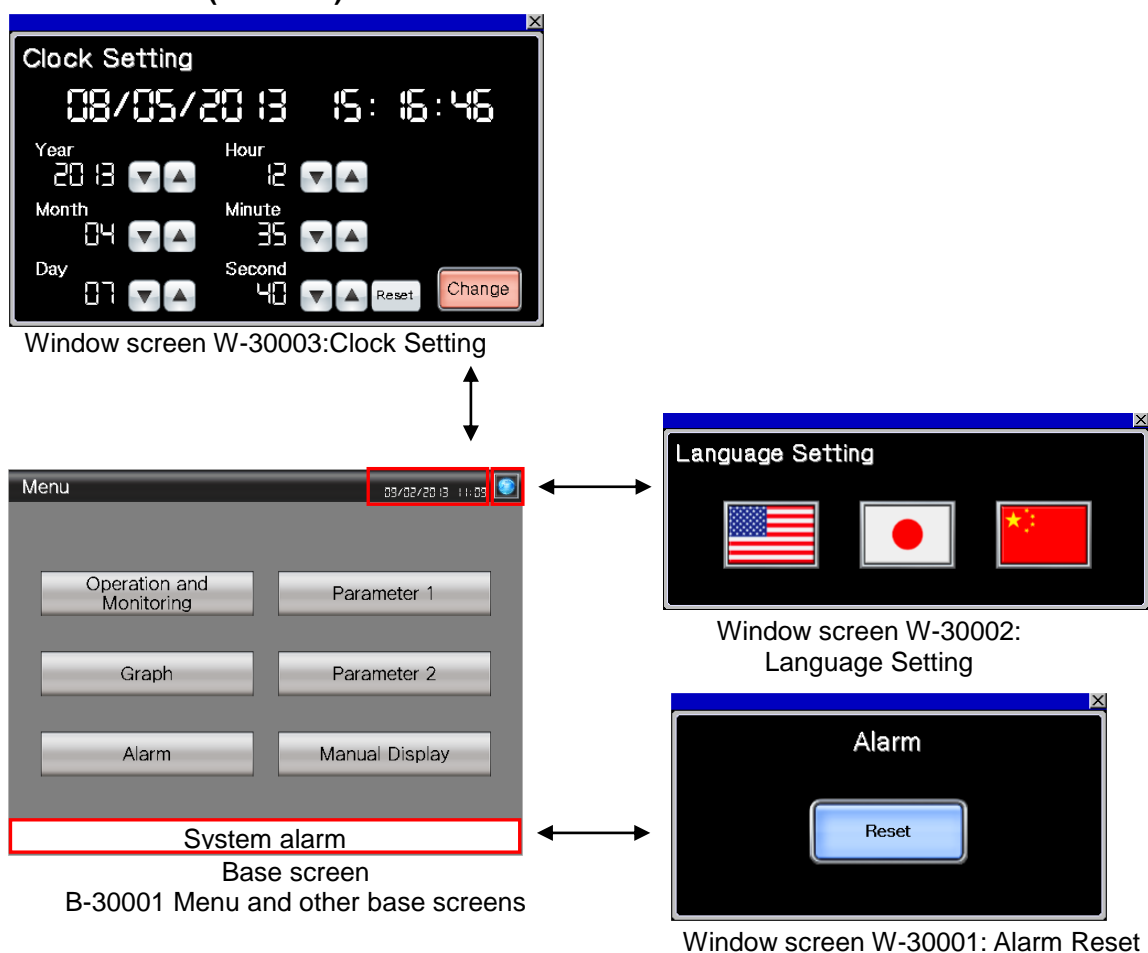
### 5.1 Display Language

The language of the text displayed on the screen can be switched between Japanese, English and Chinese (Simplified). The text strings in each language are registered in the columns No. 1 to No. 3 in the comment groups No. 499 and No. 500 as shown below. When the column No. is set in the language switching device, the language corresponding to the column No. will appear.

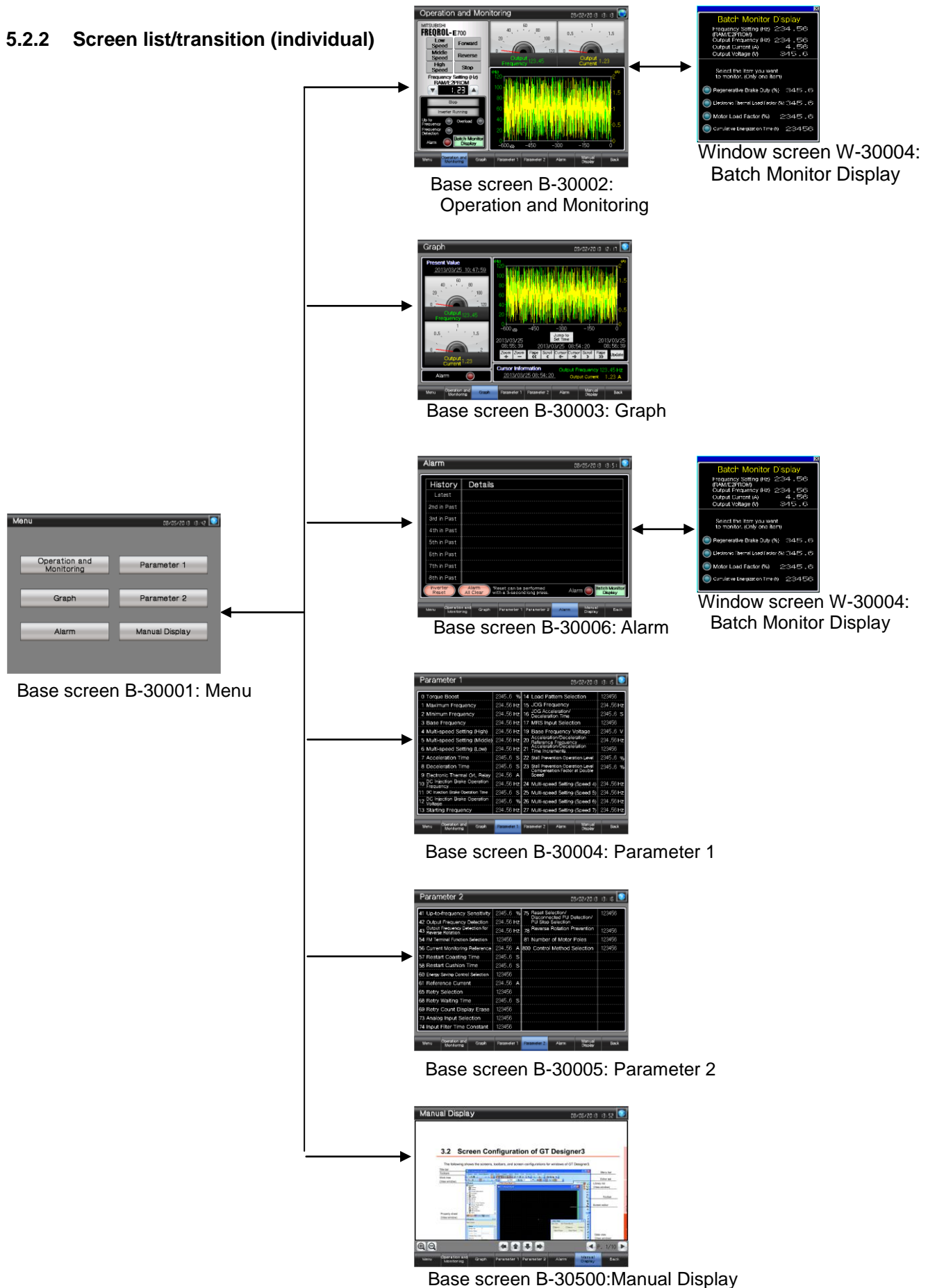
Column No.	Language
1	English
2	Japanese
3	Chinese (Simplified)

### 5.2 Screen List/Transition

#### 5.2.1 Screen list/transition (common)



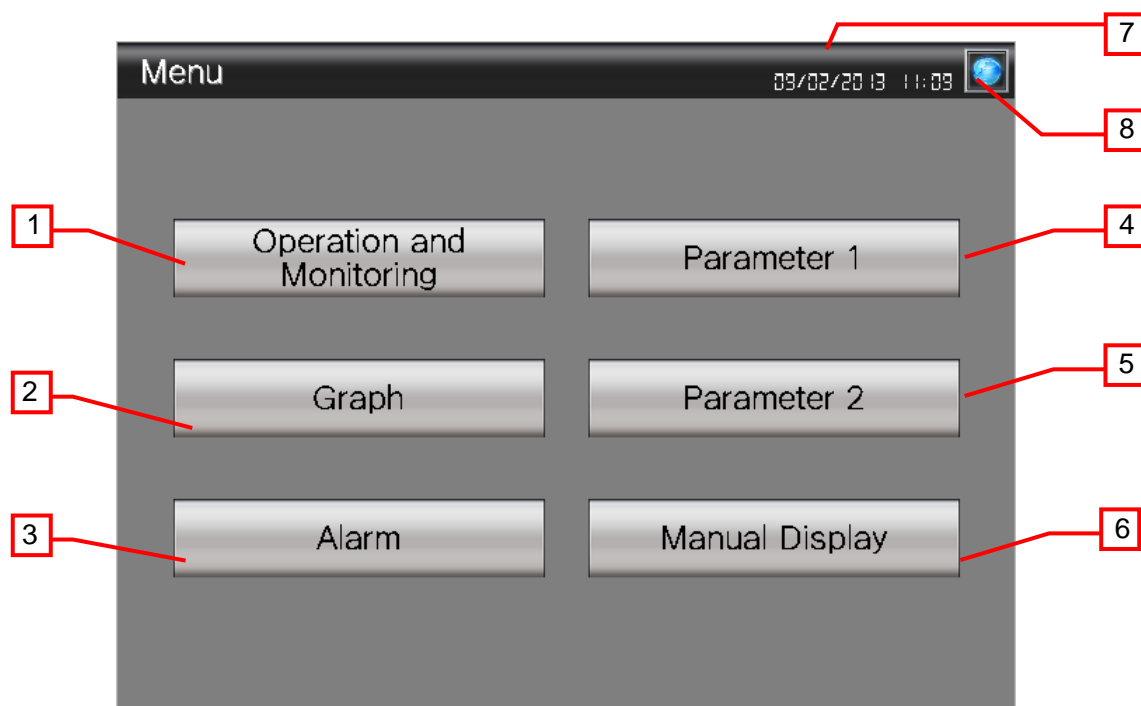
## 5.2.2 Screen list/transition (individual)





## 5.3 Explanation of Screens

### 5.3.1 Menu (B-30001)



#### Outline

This is the Menu screen.

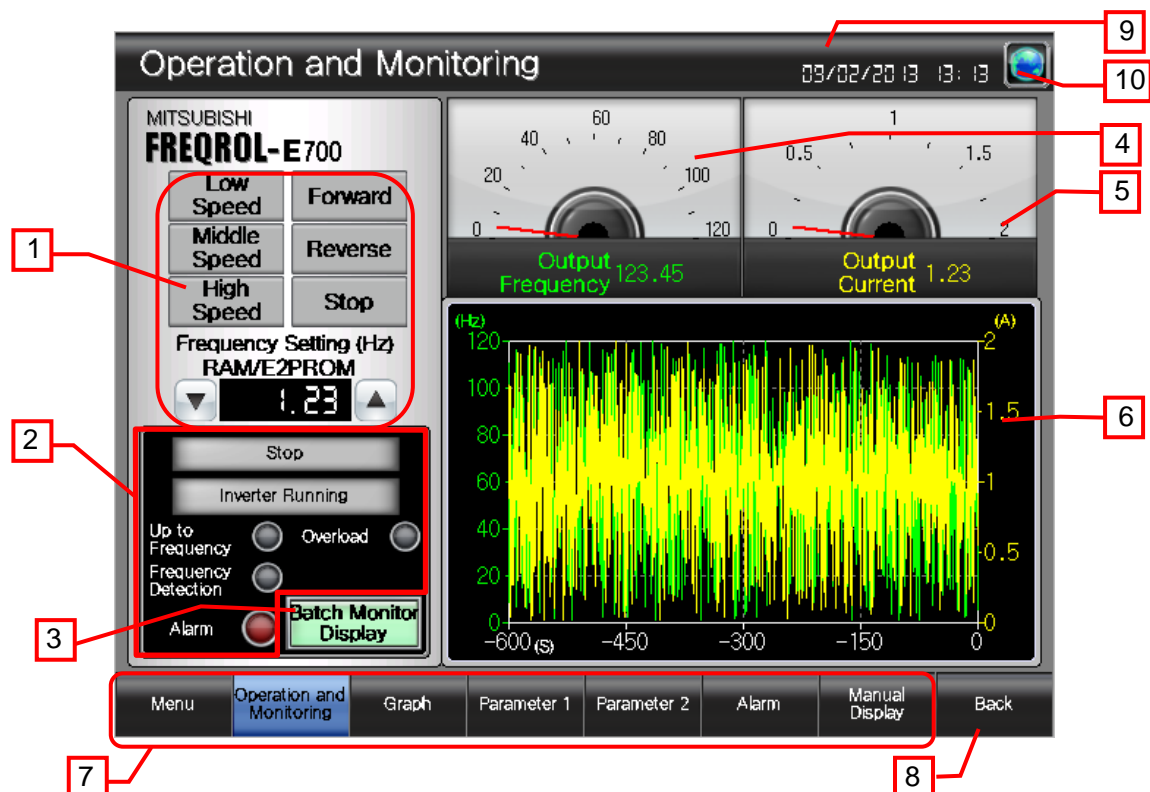
#### Description

1. Switches to the [Operation and Monitoring] screen.
2. Switches to the [Graph] screen.
3. Switches to the [Alarm] screen.
4. Switches to the [Parameter 1] screen.
5. Switches to the [Parameter 2] screen.
6. Switches to the [Manual Display] screen.
7. Displays the current date and time. Touch the area to open the [Clock Setting] window.
8. Opens the [Language Setting] window.

#### Remarks

- If a system alarm occurs, the alarm message will appear at the bottom of the screen. When touching the left end of the message, the display position of the message changes in the order of upper, center, and lower. When touching the other part of the message, the [Alarm Reset] window appears.

### 5.3.2 Operation and Monitoring (B-30002)



#### Outline

This screen is used to issue the inverter operation commands, display various monitors, and display a historical trend graph of the output frequency and output current data collected by the logging function.

#### Description

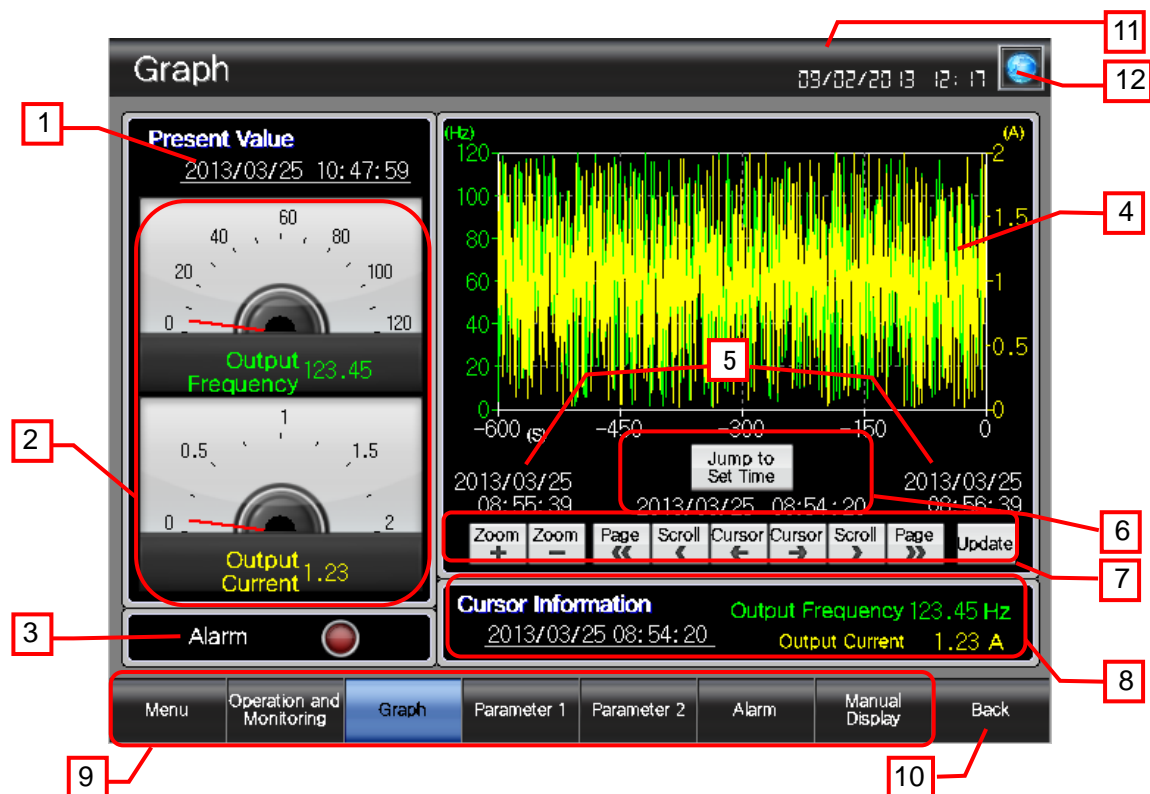
1. Sets the speed and rotation direction.
  - (1) Touch [Low Speed Operation], [Medium Speed Operation] or [High Speed Operation]. Then, touch [Forward Rotation] or [Reverse Rotation].  
The inverter will operate at the respective speed pre-set with the parameters.  
Touch [Stop] to stop the operation.
  - (2) Set the speed directly by inputting a numeric value. Then, touch [Forward Rotation] or [Reverse Rotation].  
The touch switches to the left and right of the value input area will increment or decrement the speed by one.  
Touch [Stop] to stop the operation.
2. Displays inverter status with lamps.
 

Stop/Forward/Reverse	: The rotation direction status is indicated with a light.
Inverter Running	: Lights while the inverter is running.
Up to Frequency	: Lights when the output frequency reaches the set frequency.
Frequency Detection	: Lights when the output frequency is detected.
Overload	: Lights while the stall prevention function is activated.
Alarm	: Blinks when an alarm occurs.
3. Opens the [Batch Monitor Display] window.
4. Displays the output frequency with a panel meter and a numerical display.
5. Displays the output current with a panel meter and a numerical display.
6. Displays the output frequency and output current with a historical trend graph.
7. Switches to each screen. The blue switch indicates the currently displayed screen, so selecting this switch will not switch the screen.
8. Switches to the previously opened screen.
9. Displays the current date and time. Touch the area to open the [Clock Setting] window.
10. Opens the [Language Setting] window.

#### Remarks

- Object scripts are set for the speed and rotation direction switches. For more details about scripts, please refer to "5.6 Script List".
- The inverter will retain the speed and rotation set with the [Operation and Monitoring] screen even when the screen is switched.
- If a system alarm occurs, the alarm message will appear at the bottom of the screen. When touching the left end of the message, the display position of the message changes in the order of upper, center, and lower. When touching the other part of the message, the [Alarm Reset] window appears.

### 5.3.3 Graph (B-30003)



#### Outline

This screen displays the output frequency and output current data collected using the logging function in a historical trend graph.

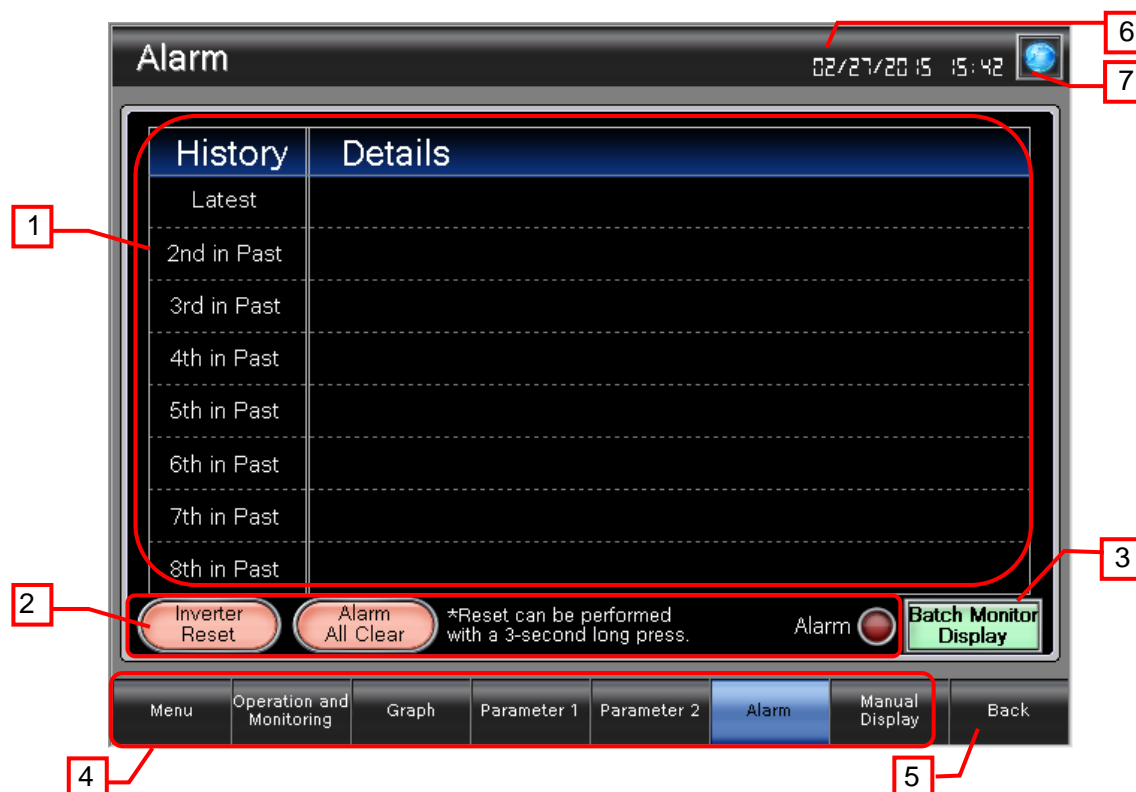
#### Description

1. Displays the current date and time.
2. Displays the current output frequency and output current values with panel meters and numerical displays.
3. Blinks when an alarm occurs.
4. Displays the output frequency and output current in a historical trend graph. Touch the graph to show the cursor. While touching the graph area, flicking the area will scroll the graph left and right. Pinching out and in will zoom in and out the graph based on the time axis.
5. Displays the historical trend graph's beginning position time and end position time.
6. When the date and time are entered, and the [Jump to Set Time] switch is touched, the values for the specified date and time will appear at the center of the graph. The current date and time are stored when the screen is displayed initially.
7. Operates the historical trend graph.
  - Zoom In : Enlarges (x2) the graph's time axis based on the new data axis.
  - Zoom Out : Reduces (x1/2) the graph's time axis based on the new data axis.
  - Page << : Scrolls the page to the left.
  - Scroll < : Scrolls the graph to the left.
  - Cursor <-- : Displays a cursor, and scrolls the cursor in the direction of the older data.
  - Cursor --> : Displays a cursor, and scrolls the cursor in the direction of the newer data.
  - Scroll > : Scrolls the graph to the right.
  - Page >> : Scrolls the page to the right.
  - Update : Clears the cursor, and displays new data.
8. Displays the date/time, output frequency and output current of the cursor position.
9. Switches to each screen. The blue switch indicates the currently displayed screen, so selecting this switch will not switch the screen.
10. Switches to the previously opened screen.
11. Displays the current date and time. Touch the area to open the [Clock Setting] window.
12. Opens the [Language Setting] window.

#### Remarks

- An object script is set for the [Jump to Set Time] switch. For more details about scripts, please refer to "5.6 Script List".
- The inverter will retain the speed and rotation set with the [Operation and Monitoring] screen even when the screen is switched.
- If a system alarm occurs, the alarm message will appear at the bottom of the screen. When touching the left end of the message, the display position of the message changes in the order of upper, center, and lower. When touching the other part of the message, the [Alarm Reset] window appears.

### 5.3.4 Alarm (B-30006)



#### Outline

This screen displays the inverter's alarm history.

#### Description

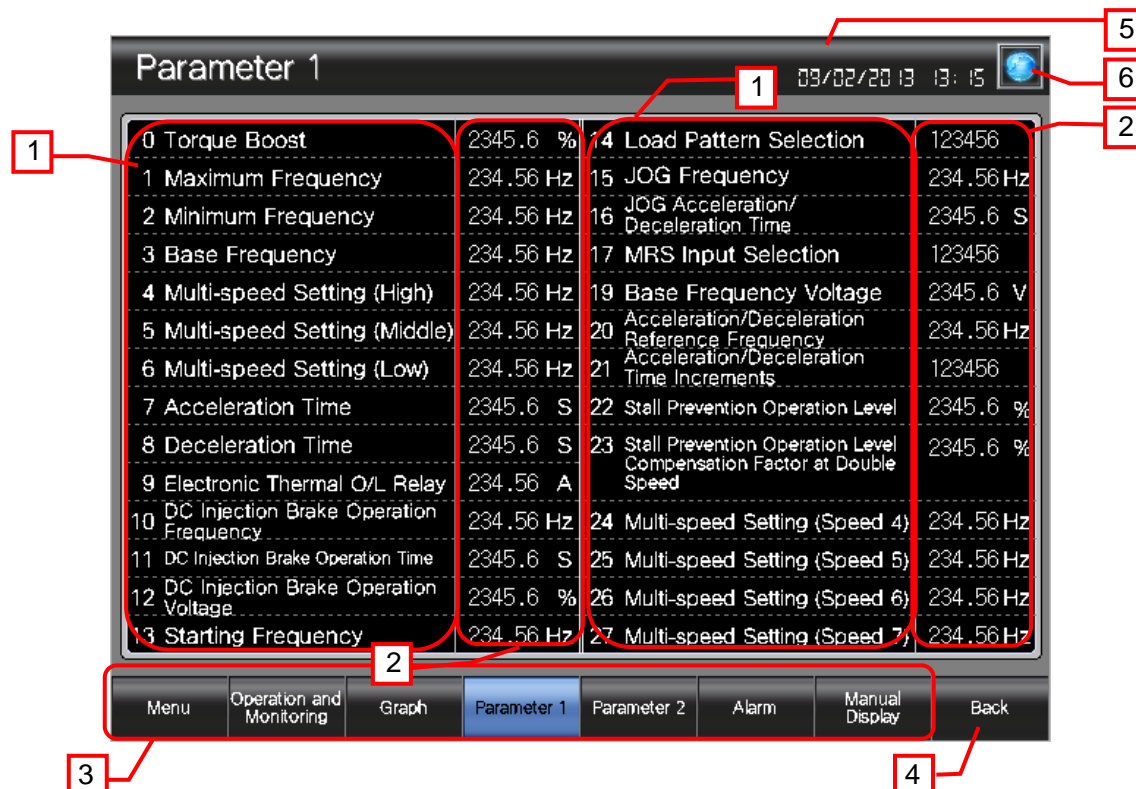
1. Displays the latest to eighth previous alarms using word lamps.
2. These are switches and lamps related to the alarm.
  - Inverter Reset : Resets the inverter.
  - Alarm All Clear : Clears all alarm history.
  - Alarm : Blinks when an alarm occurs.

Press [Inverter Reset] and [Alarm All Clear] for 3 seconds to activate.
3. Opens the [Batch Monitor Display] window.
4. Switches to each screen. The blue switch indicates the currently displayed screen, so selecting this switch will not switch the screen.
5. Switches to the previously opened screen.
6. Displays the current date and time. Touch the area to open the [Clock Setting] window.
7. Opens the [Language Setting] window.

#### Remarks

- The inverter will retain the speed and rotation set with the [Operation and Monitoring] screen even when the screen is switched.
- If a system alarm occurs, the alarm message will appear at the bottom of the screen. When touching the left end of the message, the display position of the message changes in the order of upper, center, and lower. When touching the other part of the message, the [Alarm Reset] window appears.

### 5.3.5 Parameter 1 (B-30004), Parameter 2 (B-30005)



#### Outline

Displays and sets the inverter parameters.

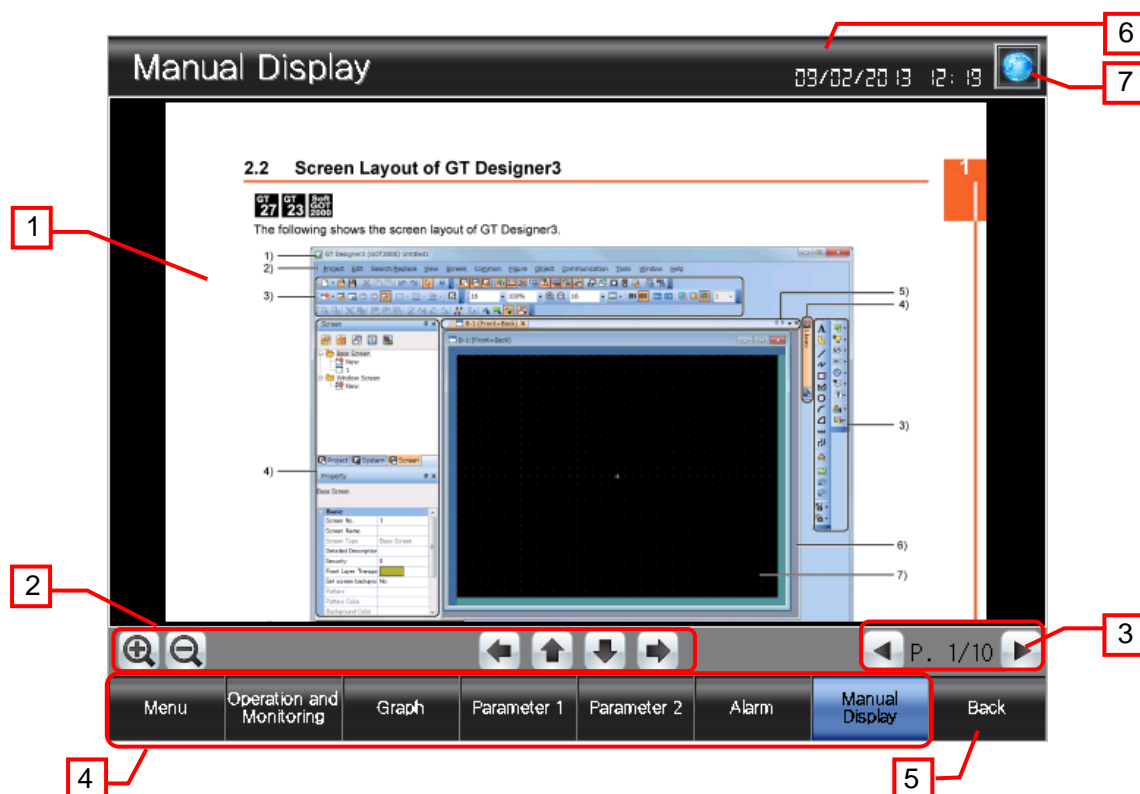
#### Description

1. Displays parameter data names.
2. Displays parameter setting values. The set values can be changed. On the GOT, a parameter set as 9999 with the inverter will be displayed as 65535, and a parameter set as 8888 will be displayed as 65520.
3. Switches to each screen. The blue switch indicates the currently displayed screen, so selecting this switch will not switch the screen.
4. Switches to the previously opened screen.
5. Displays the current date and time. Touch the area to open the [Clock Setting] window.
6. Opens the [Language Setting] window.

#### Remarks

- The inverter will retain the speed and rotation set with the [Operation and Monitoring] screen even when the screen is switched.
- If a system alarm occurs, the alarm message will appear at the bottom of the screen. When touching the left end of the message, the display position of the message changes in the order of upper, center, and lower. When touching the other part of the message, the [Alarm Reset] window appears.






## 5.3.6 Manual Display (B-30500)



### Outline

This screen displays the manual of the currently displayed language.

### Description

1. Manual Display displays a document with document ID (201 to 203) according to the language. The page 1 is displayed when the screen is displayed initially. While touching the document, flicking to 8 directions will scroll the document to 8 directions. While displaying the edge of the document, flicking the document will switch pages. Pinching out and in will zoom in and out the document in 3 steps (large, middle, and small).
2. These switches operate the displayed document.  
 : Enlarges or reduces the displayed document.  
 : Scrolls the displayed document to the left or right.  
 : Scrolls the displayed document up and down.
3. These switches operate the displayed document page.  
 : Displays the page number of the displayed document. Touch the value to change the page number.  
 : Switches to the previous or next page of the displayed document.
4. Switches to each screen. The blue switch indicates the currently displayed screen, so selecting this switch will not switch the screen.
5. Switches to the previously opened screen.
6. Displays the current date and time. Touch the area to open the [Clock Setting] window.
7. Opens the [Language Setting] window.



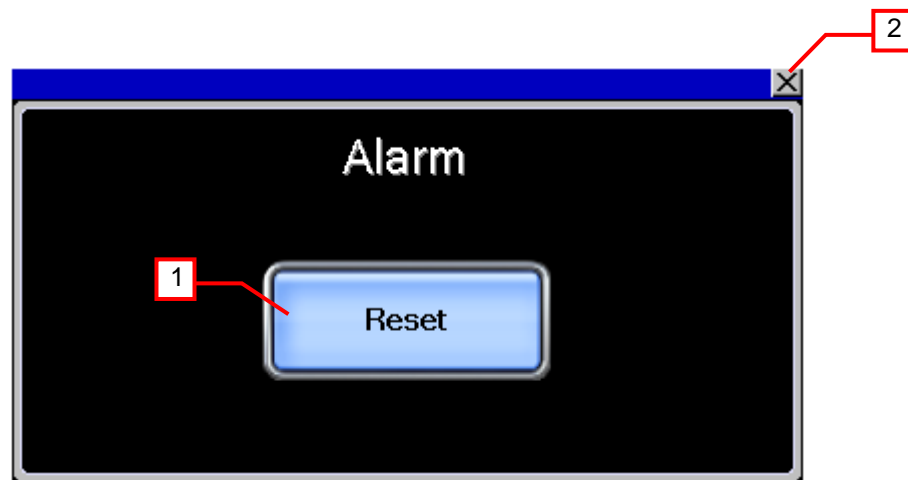
## Remarks

- The language setting reflect documents for Manual display. The relation of the column No. of the comment group No., languages and document (Document ID) is shown below.

Column No. of the comment group No	Language	Document ID
1	English	201
2	Japanese	202
3	Chinese (Simplified)	203

- When GOT is started, the document page is set to No. "1" and the Document ID is set to "201" with the project script. For more details about scripts, please refer to "5.6 Script List".
- The page feed switches are set not to exceed the total number of document pages by object script. For more details about scripts, please refer to "5.6 Script List".
- The document data for the manual display should be prepared by the customers. For more details, please refer to "6. MANUAL DISPLAY".
- If a system alarm occurs, the alarm message will appear at the bottom of the screen. When touching the left end of the message, the display position of the message changes in the order of upper, center, and lower. When touching the other part of the message, the [Alarm Reset] window appears.

### 5.3.7 Alarm Reset (W-30001)



#### Outline

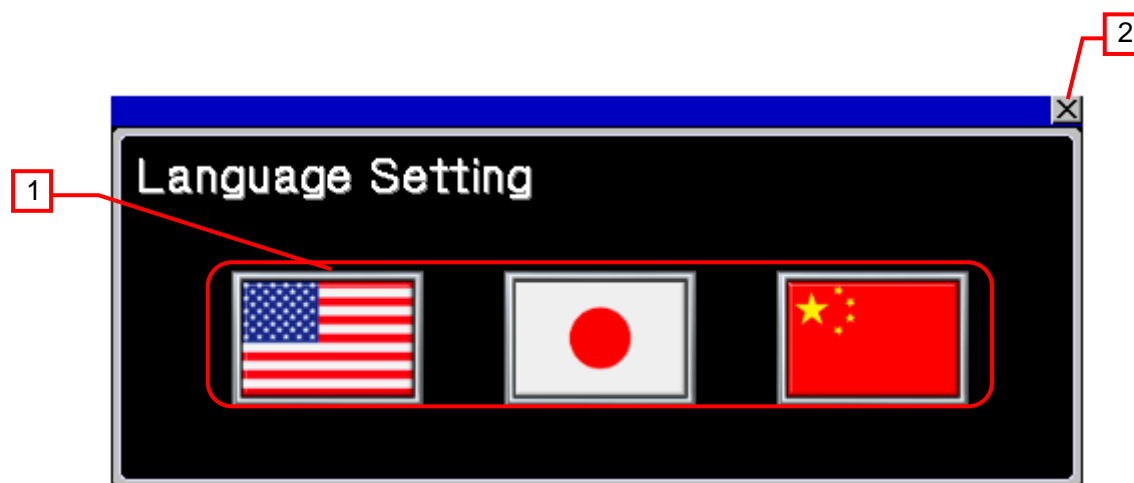
This window screen allows resetting the system alarm.

#### Description

1. Resets the system alarm, and closes the window screen after 1 second.
2. Closes the window screen.

#### Remarks

### 5.3.8 Language Setting (W-30002)



#### Outline

This window screen allows selecting the GOT language.

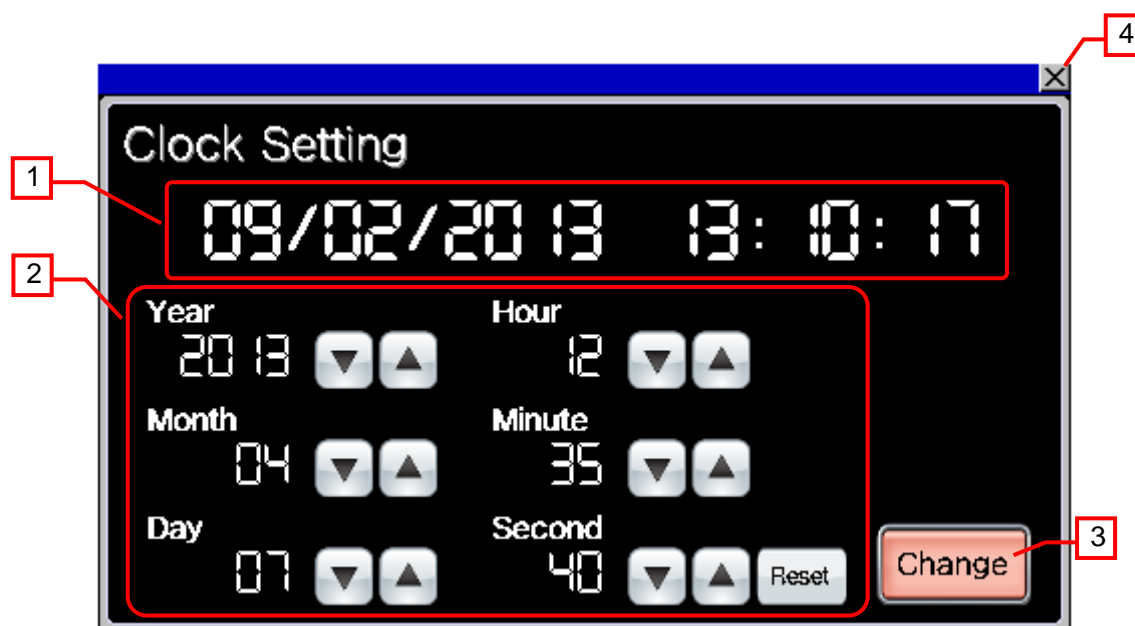
#### Description

1. Switches the language and closes the window screen.
2. Closes the window screen.

#### Remarks

- The system language and Document ID for manual display also switched corresponding to the display language.



### 5.3.9 Clock Setting (W-30003)



#### Outline

This window screen allows changing the GOT clock data.

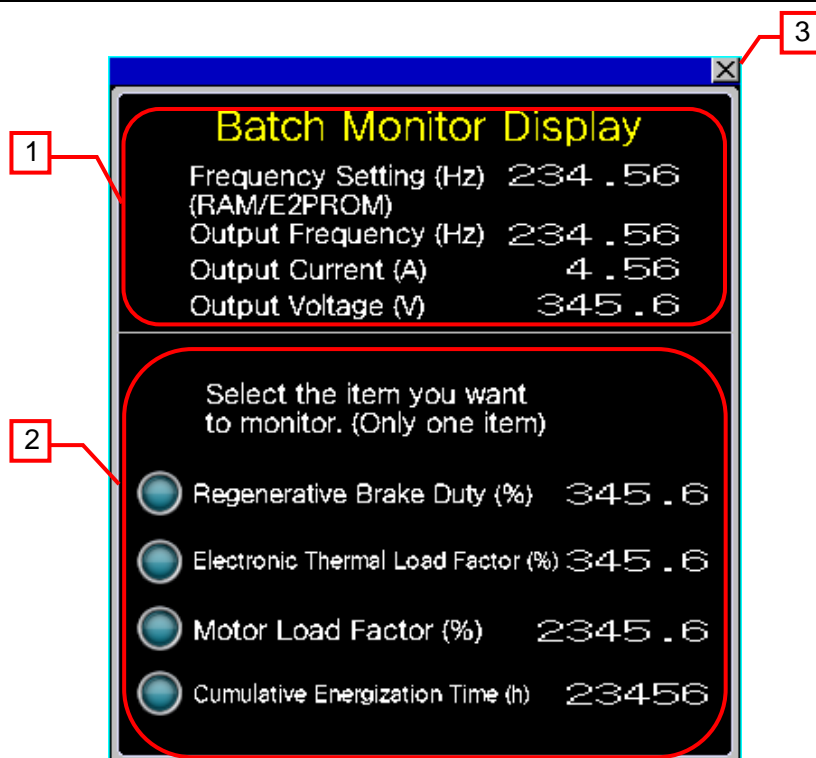
#### Description

1. Displays the current date and time.
2. Use   switches to change the date and time. Hold down the switches to increment or decrement the value continuously. The [Reset] switch resets the seconds.
3. Applies the set date and time to the GOT clock data, and closes the window screen after 1 second.
4. Closes the window screen.

#### Remarks

- The date and time at window opening are initially set as the clock data to be newly set.
- Object scripts are set for the numerical display of the year, month, date, hour, minute and second in the clock data to be newly set. For more details about scripts, please refer to "5.6 Script List".

### 5.3.10 Batch Monitor Display (W-30004)



#### Outline

This screen displays a batch monitor and a special monitor of data items.

#### Description

1. Displays the frequency setting, output frequency, output current and output voltage values.
2. Displays the special monitor items of the inverter. Touch and select the item names to be monitored. When an item is selected, the indicator is lit and the numerical display appears. The numerical displays of non-selected items are deleted.
3. Closes the window screen.

#### Remarks

- Object scripts are set for numerical displays of the special monitor. For more details about scripts, please refer to "5.6 Script List".

## 5.4 Device List

Some of the devices specified to the on-screen switches and lamps, etc., are also used for common settings of functions such as scripts. Using [Batch Edit] is recommended to change these devices in a batch. For more details about using [Batch Edit], please refer to the "GT Designer3 (GOT2000) Help".

### 5.4.1 Devices of the controller

Type	Device No.	Application
Bit	RS0:0	Running
	RS1:0	Forward rotation
	RS2:0	Reverse rotation
	RS3:0	Up to frequency
	RS4:0	Overload
	RS6:0	Frequency detection
	RS7:0	Alarm
Word	A0:0	2nd in past
	A1:0	Latest
	A2:0	4th in past
	A3:0	3rd in past
	A4:0	6th in past
	A5:0	5th in past
	A6:0	8th in past
	A7:0	7th in past
	Pr0:0	Torque boost
	Pr1:0	Maximum frequency
	Pr2:0	Minimum frequency
	Pr3:0	Base frequency
	Pr4:0	Multi-speed setting (high speed)
	Pr5:0	Multi-speed setting (medium speed)
	Pr6:0	Multi-speed setting (low speed)
	Pr7:0	Acceleration time
	Pr8:0	Deceleration time
	Pr9:0	Electronic thermal O/L relay
	Pr10:0	DC injection brake operation frequency
	Pr11:0	DC injection brake operation time
	Pr12:0	DC injection brake operation voltage
	Pr13:0	Starting frequency
	Pr14:0	Load pattern selection
	Pr15:0	JOG frequency
	Pr16:0	JOG acceleration/deceleration time
	Pr17:0	MRS input selection
	Pr19:0	Base frequency voltage
	Pr20:0	Acceleration/Deceleration reference frequency
	Pr21:0	Acceleration/Deceleration time increments
	Pr22:0	Stall prevention operation level
	Pr23:0	Stall prevention operation level compensation factor at double speed
	Pr24:0	Multi-speed Setting (Speed 4)
	Pr25:0	Multi-speed Setting (Speed 5)
	Pr26:0	Multi-speed Setting (Speed 6)
	Pr27:0	Multi-speed Setting (Speed 7)
	Pr41:0	Up-to-frequency sensitivity
	Pr42:0	Output frequency detection
	Pr43:0	Output frequency detection for reverse rotation
	Pr54:0	FM terminal function selection
	Pr56:0	Current monitoring reference
	Pr57:0	Restart coasting time
	Pr58:0	Restart cushion time
	Pr60:0	Energy saving control selection
	Pr61:0	Reference current
	Pr65:0	Retry selection

Type	Device No.	Application
Word	Pr68:0	Retry waiting time
	Pr69:0	Retry count display erase
	Pr73:0	Analog input selection
	Pr74:0	Input filter time constant
	Pr75:0	Reset selection/Disconnected PU detection/PU stop selection
	Pr78:0	Reverse rotation prevention selection
	Pr81:0	Number of motor poles
	Pr800:0	Control method selection
	SP110:0	Setting frequency (RAM, EEPROM)
	SP111:0	Output frequency
	SP112:0	Output current
	SP113:0	Output voltage
	SP114:0	Special monitor
	SP115:0	Special monitor selection No.
	SP116:0	Alarm all clear
	SP122:0	Run command
	SP125:0	Inverter reset

#### 5.4.2 GOT internal devices

Type	Device No.	Application
Bit	GB40	Script trigger (Always ON)
	GB60131	Temporary bit for forward rotation switch script
	GB60132	Temporary bit for reverse rotation switch script
	GB60133	Temporary bit for low-speed script switch
	GB60134	Temporary bit for medium-speed script switch
	GB60135	Temporary bit for high-speed script switch
	GB60136	Script trigger (Forward rotation switch)
	GB60137	Script trigger (Reverse rotation switch)
	GB60138	Script trigger (Low-speed switch)
	GB60139	Script trigger (Medium-speed switch)
	GB60140	Script trigger (High-speed switch)
	GD60031.b13	GOT error reset signal
	GS512.b0	Time change signal
Word	GD60000	Base screen switching
	GD60001	Overlap window 1 screen switching
	GD60004	Overlap window 2 screen switching
	GD60021	Language switching
	GD60022	System language switching
	GD60031, GD60041	System information
	GD60080 to GD60082	Document display
	GD61201 to GD61202	Graph information in historical trend graph
	GD61221 to GD61224	Cursor position time in historical trend graph
	GD61225 to GD61228	Beginning position time in historical trend graph
	GD61229 to GD61232	End position time in historical trend graph
	GD61233 to GD61235	Display position time specification in historical trend graph
	GD63990 to GD63995	Clock digital switch
	GS513 to GS516	Changed time
	GS650 to GS652	Current time
	TMP950 to TMP996	For script operation

## 5.5 Comment List

Comment group No.	Comment No.	Where comments are used
499	No.1 to No.56	B-30006
500	No.1 to No.4	B-30001 to B-30500
	No.4	W-30001
	No.5, No.6	B-30001 to B-30500
	No.7	B-30001
	No.8	B-30002 to B-30500
	No.11 to No.28	B-30002
	No.29, No.30	B-30002 to B-30500
	No.31 to No.34	B-30002
	No.41 to No.56	B-30003
	No.71 to No.97	B-30004
	No.98 to No.117	B-30005
	No.121 to No.134	B-30006
	No.151	W-30001, W-30003
	No.152 to No.160	W-30003
	No.171 to No.183	W-30004

## 5.6 Script List

Item	Settings
Project script	Specified
Screen script	B-30003,B-30500
Object script	B-30002,B-30500,W-30003,W-30004

### 5.6.1 Project script

Script No.	30001	Script name	Script30001
Comment	Initial Setting		
Data type	Signed BIN16	Trigger type	Rise, GB40
[w:GD60080]=201; //Set Document ID to 201 [w:GD60081]=1; //Set Document page No. to 1			

### 5.6.2 Screen script

#### Base screen 30003

Script No.	30002	Script name	Script30002
Comment	Obtain Present Time		
Data type	Signed BIN16	Trigger type	When closing a screen
//Store Year, Month, Day, Hour, Minute, Second When Screen Is Displayed [w:GD61233]=[w:GS650]; [w:GD61234]=[w:GS651]; [w:GD61235]=[w:GS652];			

#### Base screen 30500

Script No.	30003	Script name	Script30003
Comment	DocumentDisplayProcessOfLastPage		
Data type	Signed BIN16	Trigger type	Ordinary
//Check the total number of document pages is not 0. if([w:GD60082]!=0){ //Compare the current page number to the total number of document pages to see if the current page number exceeds the total number. if([w:GD60081]>[w:GD60082]){ //Set the last page to display. [w:GD60081]=[w:GD60082]; } }			



### 5.6.3 Object script

#### Base screen 30002

Object	Switch	Object ID*1	10016 to 10020
Script user ID	1 to 5		
Data type	Unsigned BIN16	Trigger type	Rise, GB60136 to GB60140
<pre> if([b:GB60131] == ON) &amp;&amp; ([b:GB60133] == ON){   [0-0:w:SP122] = 10; //Forward &amp; Low Speed Operation }  if([b:GB60131] == ON) &amp;&amp; ([b:GB60134] == ON){   [0-0:w:SP122] = 18; //Forward &amp; Medium Speed Operation }  if([b:GB60131] == ON) &amp;&amp; ([b:GB60135] == ON){   [0-0:w:SP122] = 34; //Forward &amp; High Speed Operation }  if([b:GB60132] == ON) &amp;&amp; ([b:GB60133] == ON){   [0-0:w:SP122] = 12; //Reverse &amp; Low Speed Operation }  if([b:GB60132] == ON) &amp;&amp; ([b:GB60134] == ON){   [0-0:w:SP122] = 20; //Reverse &amp; Medium Speed Operation }  if([b:GB60132] == ON) &amp;&amp; ([b:GB60135] == ON){   [0-0:w:SP122] = 36; //Reverse &amp; High Speed Operation } </pre>			

#### Base screen 30500

Object	Switch	Object ID *1	20021
Script user ID	1		
Data type	Signed BIN16	Trigger type	Device Writing
<pre> //Do not exceed the total number of the document pages. if([u16:GD60081] &gt;= [u16:GD60082]){   [u16:GD60081] = [u16:GD60082] - 1; } </pre>			

#### Window screen 30003

Object	Numerical Display	Object ID *1	20014
Script user ID	1		
Data type	Unsigned BIN16	Trigger type	Rise, GB40
<pre> //Obtain Today's Year &amp; Month from Clock Data [w:TMP950] = [w:GS650] &amp; 0xF000; //Obtain Tenths Digit of "Last 2-Digits of Year" from Clock Data for Setting [w:TMP960] = [w:TMP950] &gt;&gt; 12; //Decimal Alignment [w:TMP968] = [w:TMP960] * 10; //BCD-&gt;BIN [w:TMP951] = [w:GS650] &amp; 0x0F00; //Obtain Ones Digit of "Last 2-Digits of Year" from Clock Data for Setting [w:TMP961] = [w:TMP951] &gt;&gt; 8; //BCD-&gt;BIN [w:TMP973] = 2000 + [w:TMP968] + [w:TMP961]; //Set Year to TMP973 as BIN [w:GD63990] = [w:TMP973]; //Set Year  [w:TMP952] = [w:GS650] &amp; 0x00F0; //Obtain Tenths Digit of Month from Clock Data for Setting [w:TMP962] = [w:TMP952] &gt;&gt; 4; //Decimal Alignment [w:TMP969] = [w:TMP962] * 10; //BCD-&gt;BIN [w:TMP953] = [w:GS650] &amp; 0x000F; //Obtain Ones Digit of Month from Clock Data for Setting [w:TMP974] = [w:TMP969] + [w:TMP953]; //Set Month to TMP974 as BIN [w:GD63991] = [w:TMP974]; //Set Month  [w:TMP954] = [w:GS651] &amp; 0xF000; //Obtain Tenths Digit of "Last 2-Digits of Day" from Clock Data for Setting [w:TMP963] = [w:TMP954] &gt;&gt; 12; //Decimal Alignment [w:TMP970] = [w:TMP963] * 10; //BCD-&gt;BIN [w:TMP955] = [w:GS651] &amp; 0x0F00; //Obtain Ones Digit of "Last 2-Digits of Day" from Clock Data for Setting </pre>			

```

[w:TMP964] = [w:TMP955] >> 8; //BCD->BIN
[w:TMP975] = [w:TMP970] + [w:TMP964]; //Set Day to TMP975 as BIN
[w:GD63992] = [w:TMP975]; //Set Day

[w:TMP956] = [w:GS651] & 0x00F0; //Obtain Tenths Digit of Hour from Clock Data for Setting
[w:TMP965] = [w:TMP956] >> 4; //Decimal Alignment
[w:TMP971] = [w:TMP965] * 10; //BCD->BIN
[w:TMP957] = [w:GS651] & 0x000F; //Obtain Ones Digit of Hour from Clock Data for Setting
[w:TMP976] = [w:TMP971] + [w:TMP957]; //Set Hour to TMP976 as BIN
[w:GD63993] = [w:TMP976]; //Set Hour

[w:TMP958] = [w:GS652] & 0xF000; //Obtain Tenths Digit of "Last 2-Digits of Minute" from Clock Data for Setting
[w:TMP966] = [w:TMP958] >> 12; //Decimal Alignment
[w:TMP972] = [w:TMP966] * 10; //BCD->BIN
[w:TMP959] = [w:GS652] & 0x0F00; //Obtain Ones Digit of "Last 2-Digits of Minute" from Clock Data for Setting
[w:TMP967] = [w:TMP959] >> 8; //BCD->BIN
[w:TMP977] = [w:TMP972] + [w:TMP967]; //Set Minute to TMP977 as BIN
[w:GD63994] = [w:TMP977]; //Set Minute

[w:TMP993] = [w:GS652] & 0x00F0; //Obtain Tenths Digit of Second from Clock Data for Setting
[w:TMP995] = [w:TMP993] >> 4; //Decimal Alignment
[w:TMP996] = [w:TMP995] * 10; //BCD->BIN
[w:TMP994] = [w:GS652] & 0x000F; //Obtain Ones Digit of Second from Clock Data for Setting
[w:TMP978] = [w:TMP996] + [w:TMP994]; //Set Second to TMP978 as BIN
[w:GD63995] = [w:TMP978]; //Set Second

```

Object	Numerical Display	Object ID *1	20015
Script user ID	2		
Data type	Unsigned BIN16	Trigger type	Ordinary

//BIN -> BCD Conversion

```

[w:TMP979] = [w:GD63990] - 2000; //Last 2-Digits of Year

```

```

[w:TMP980] = (([w:TMP979] / 10) << 4) + ([w:TMP979] % 10); //Year BIN -> BCD
[w:TMP981] = (([w:GD63991] / 10) << 4) + ([w:GD63991] % 10); //Month BIN -> BCD
[w:TMP982] = (([w:GD63992] / 10) << 4) + ([w:GD63992] % 10); //Day BIN -> BCD
[w:TMP983] = (([w:GD63993] / 10) << 4) + ([w:GD63993] % 10); //Hour BIN -> BCD
[w:TMP984] = (([w:GD63994] / 10) << 4) + ([w:GD63994] % 10); //Minute BIN -> BCD
[w:TMP985] = (([w:GD63995] / 10) << 4) + ([w:GD63995] % 10); //Second BIN -> BCD

```

Object	Numerical Display	Object ID *1	20016
Script user ID	3		
Data type	Unsigned BIN16	Trigger type	Ordinary

//Year & Month Setting

```

[w:GS513] = ([w:TMP980] << 8) + [w:TMP981]; //Set Year & Month to Change Time Device

```

Object	Numerical Display	Object ID *1	20017
Script user ID	4		
Data type	Unsigned BIN16	Trigger type	Ordinary

//Date & Time Setting

```

[w:GS514] = ([w:TMP982] << 8) + [w:TMP983]; //Set Date & Time to Change Time Device

```

Object	Numerical Display	Object ID *1	20018
Script user ID	5		
Data type	Unsigned BIN16	Trigger type	Ordinary

//Minute & Second Setting

```

[w:GS515] = ([w:TMP984] << 8) + [w:TMP985]; //Set Minute & Second to Change Time Device

```

Object	Numerical Display	Object ID *1	20019
Script user ID	6		
Data type	Unsigned BIN16	Trigger type	Ordinary
<pre>//Day of Week Setting  [w:TMP986] = [w:GD63990]; //Year (BIN) [w:TMP987] = [w:GD63991]; //Month (BIN) [w:TMP988] = [w:GD63992]; //Day (BIN)  if(([w:TMP987] == 1)    ([w:TMP987] == 2)){ //Correction Processing to Calculate January and February as 13th/14th Month     [w:TMP986] = [w:TMP986] - 1; //Subtract 1 from Year     [w:TMP987] = [w:TMP987] + 12; //Add 12 to Month }  [w:TMP989] = [w:TMP986]/4; //Create Items Required for Zeller's Congruence [w:TMP990] = [w:TMP986]/100; //Create Items Required for Zeller's Congruence [w:TMP991] = [w:TMP986]/400; //Create Items Required for Zeller's Congruence [w:TMP992] = (13*[w:TMP987]+8)/5; //Create Items Required for Zeller's Congruence  //Calculate Day of Week Using Zeller's Congruence and Set the Day to Change Time Device [w:GS516] = ([w:TMP986]+[w:TMP989]-[w:TMP990]+[w:TMP991]+[w:TMP992]+[w:TMP988])%7;</pre>			

#### Window screen 30004

Object (Name)	Numerical display	Object ID *1	10004
Script user ID	1		
Data type	Signed BIN16	Trigger type	Ordinary
<pre>if([0-0:w:SP115] == 9){ //Action Conditions Satisfied my.active = 1; //Enable Updates redraw_object(); //Update Objects }else{ //Action Conditions Not Satisfied my.active = 0; //Disable Updates clear_object(); //Clear Objects }</pre>			
Object (Name)	Numerical display	Object ID *1	10005
Script user ID	2		
Data type	Signed BIN16	Trigger type	Ordinary
<pre>if([0-0:w:SP115] == 10){ //Action Conditions Satisfied my.active = 1; //Enable Updates redraw_object(); //Update Objects }else{ //Action Conditions Not Satisfied my.active = 0; //Disable Updates clear_object(); //Clear Objects }</pre>			
Object (Name)	Numerical display	Object ID *1	10006
Script user ID	3		
Data type	Signed BIN16	Trigger type	Ordinary
<pre>if([0-0:w:SP115] == 24){ //Action Conditions Satisfied my.active = 1; //Enable Updates redraw_object(); //Update Objects }else{ //Action Conditions Not Satisfied my.active = 0; //Disable Updates clear_object(); //Clear Objects }</pre>			

Object (Name)	Numerical display	Object ID *1	10007
Script user ID	4		
Data type	Signed BIN16	Trigger type	Ordinary
<pre> if([0-0:w:SP115] == 20){    //Action Conditions Satisfied my.active = 1;           //Enable Updates redraw_object();         //Update Objects }else{                    //Action Conditions Not Satisfied my.active = 0;           //Disable Updates clear_object();          //Clear Objects } </pre>			

\*1 The Object ID might be changed when a screen is utilized.

## 6. MANUAL DISPLAY

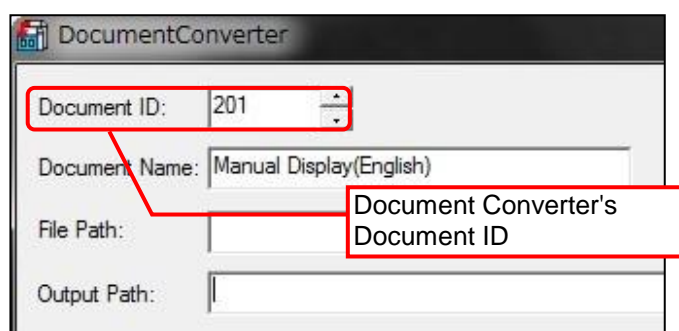
Manuals can be displayed using the document display function. For more details about the document display function, please refer to the "GT Designer3 (GOT2000) Help". Please note that the document display function does not support language switching. Therefore, in the sample screens, the language of document is switched by switching the document (Document ID) specified for a display language.

### 6.1 Preparing Document Data for Manual Display

Example: Displaying a English manual (document) for Manual Display on the base screen B-30500

- (1) Convert the manual (Word or Excel, etc.) to be displayed into the document data (JPEG file) that can be used with the document display function by using Document Converter. Set the Document Converter's [Document ID] to 201.

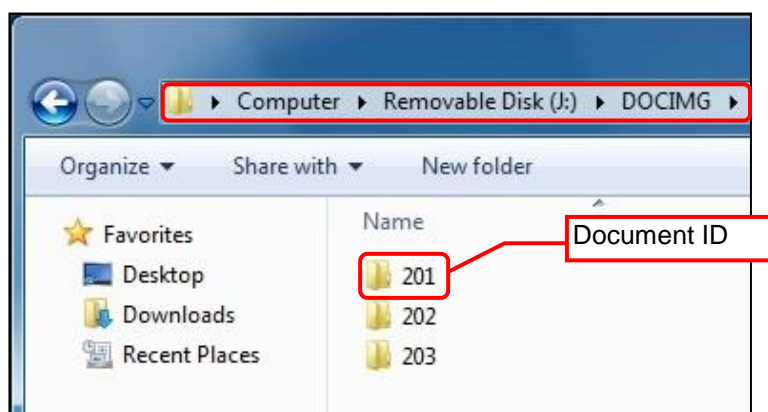
\*For details of the relation between Document ID and Display language, please refer to the table below.



Column No. of the comment group No	Language	Document ID
1	English	201
2	Japanese	202
3	Chinese (Simplified)	203

\*Please use Document Converter 2.09k or later. The total number pages and pages switches cannot work properly with 2.08 or older versions.

- (2) The document data is generated in the 201 folder in the DOCIMG. Save the entire DOCIMG folder into the SD card root directory without changing the folder configuration inside the DOCIMG folder.



SD card folder configuration

Note: In case the total number of pages is 100 or more.

This sample is made with the assumption that the total number of pages is up to 99 pages. If it exceeds 99 pages, please modify the format of numerical input (the number of "#") that displays the total number of pages and the page number of the currently displayed page.